

The Importance of Policy Assessment to Dismantle the Impact of Racism on Availability and Effectiveness of Social Care

Nefertiti OjiNjideka Hemphill,
PhD, MS

Muhammad Khanan Chaudhry,
BA

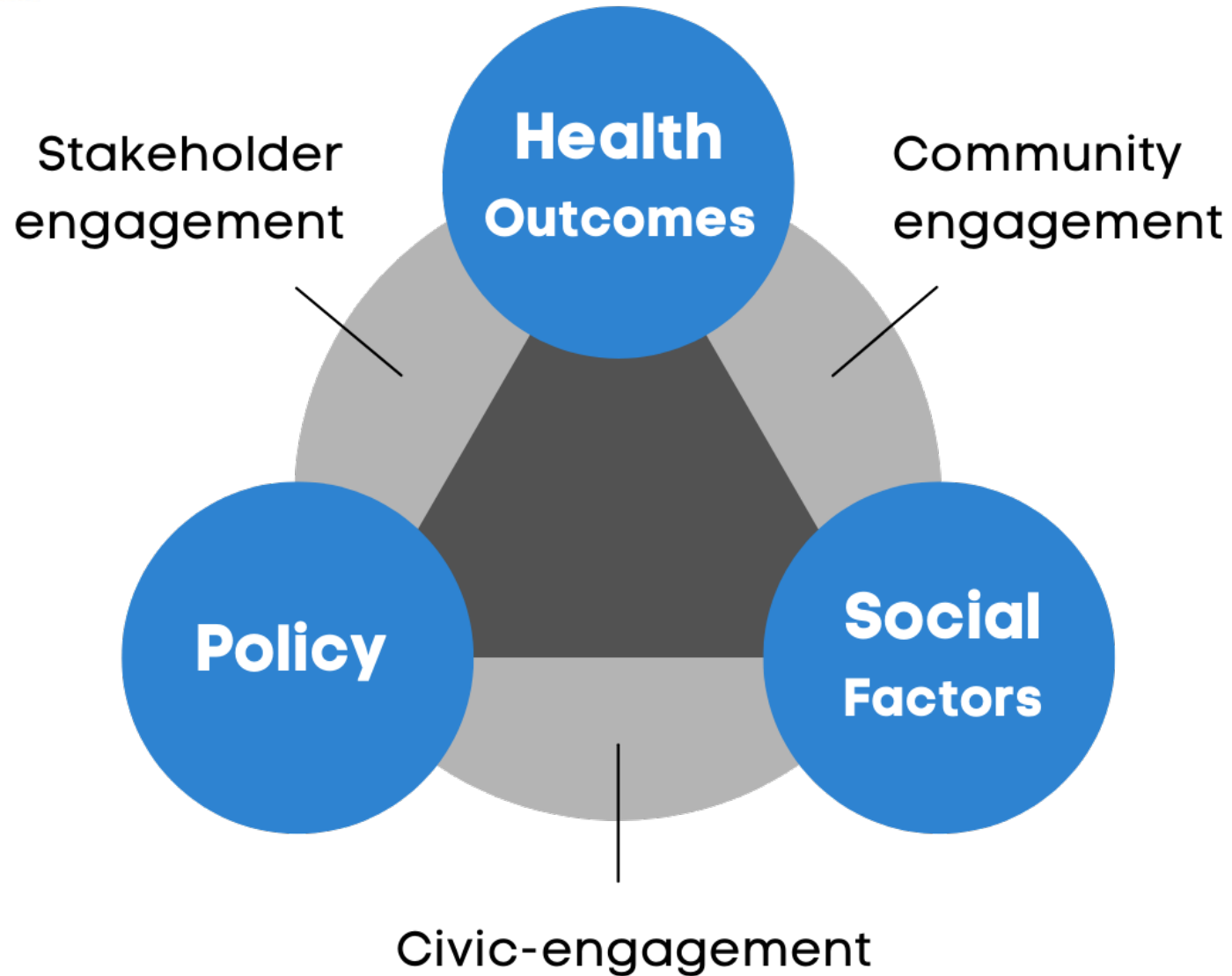


ATW HEALTH SOLUTIONS
Raising Healthcare's Standard



ATW HEALTH SOLUTIONS
Raising Healthcare's Standard

Policy & Public Health





ATW HEALTH SOLUTIONS
Raising Healthcare's Standard

Social Conditions



Poverty

Marginalization

Discrimination

Racism

Marginalized communities and communities of color are disproportionately affected by adverse social conditions



Mental Health within Communities of Color

Impact of negative social conditions on mental health:

- Black youth suicide rates rose by 30% from 2014-2019 (**Ramchand et al., 2021**).
- AAPI women between the ages of 65-84 have the highest rates of suicide among any racial group (**Liu et al., 2022**)
- Approximately 13.7% of Native Hawaiian adults living in Hawaii met the diagnostic criteria for depressive disorders (**González et al., 2010**).
- Across religious groups, 7.9% of Muslim (n=809), 5.1% of Protestant (n=314), 6.1% of Catholic (n=245), and 3.6% of Jewish (n=415) respondents reported an lifetime suicide attempt (**Awaad et al., 2021**).



Factors Influencing Mental Health

Exposures

Examples include:

- Poverty
- Violence
- Media
- Discrimination
- Racism
- Poor access to care

Risk Factors

Examples include:

- Adverse childhood events
- Trauma
- Poor family support
- Bullying
- Seclusion

Protective Factors

Examples include:

- Self-esteem
- Strong family support
- Belonging
- Social awareness
- Positive ethnic identity





ATW HEALTH SOLUTIONS
Raising Healthcare's Standard

What is Policy?

A law, regulation, procedure, administrative action, incentive or voluntary practice of governments and other institutions. Within the context of public health, policy development includes advancing and implementing public health law, regulations, or voluntary practices that influence systems development, organizations change, and individual behavior to promote improvements in health.

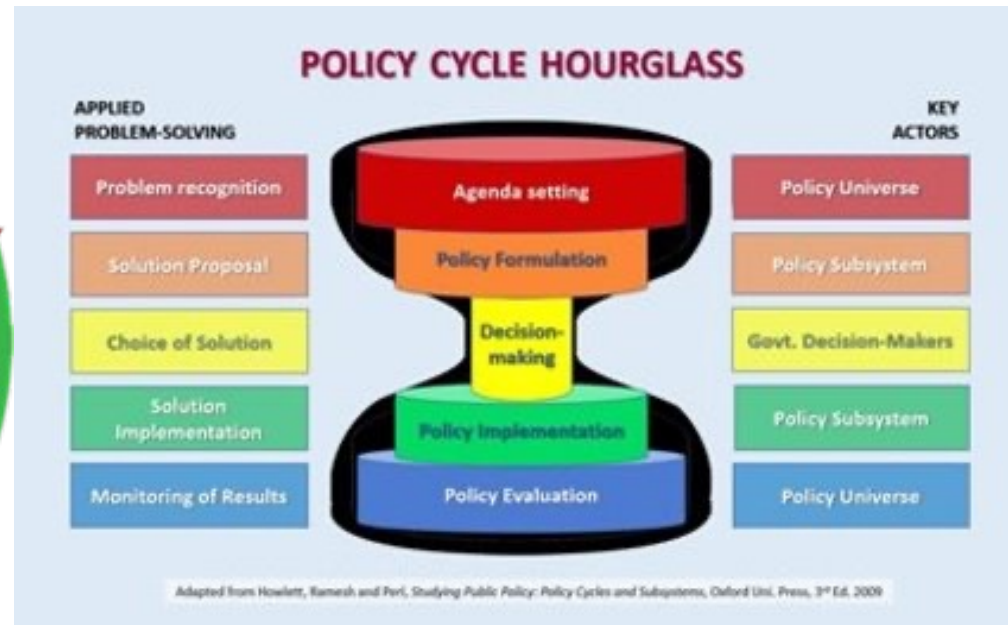


ATW HEALTH SOLUTIONS
Raising Healthcare's Standard

Current Policy Frameworks



CDC Policy Process Cycle



Policy Cycle Hourglass



CDC Health in All Policies



Policy Evaluation vs. Assessment

- Policy evaluation is NOT the same as policy assessment

Policy Evaluation

- Evaluation determines whether a policy does what it was designed to do
- For example, does a red-light traffic law **reduce the number of accidents** in a neighborhood area
- Current policy frameworks are evaluation tools and are not designed for policy assessment

Policy Assessment

- Assessing the impact of a policy on specific outcome
- For example, does a red-light traffic law **impact a specific health outcome** such as mental health in a neighborhood area



ATW HEALTH SOLUTIONS
Raising Healthcare's Standard

Our Policy Framework Model for BYMH

In conjunction with the U.S. Department of Health & Human Services Office of Minority Health:

- We developed the Black Youth Mental Health (BYMH) Policy Assessment Framework Model and BYMH Policy Assessment Tool for Promoting Behavioral Health Among Black Youth.
- Both the model and tool are designed to address the gaps of other policy frameworks as it relates to mental wellness among Black youth.

Draft model currently under review.



ATW HEALTH SOLUTIONS
Raising Healthcare's Standard

Our Policy Assessment Tool for BYMH

The BYMH Policy Assessment Tool is comprised of three phases:

Phase 1: Policy Identification

- Identify the relevant policy

Phase 2: Policy Assessment

- Appraisal
- Scoring
- Feasibility

Phase 3: Strategic Reform & Implementation

- Develop a Strategy for Policy Reform & Implementation

BYMH Policy Assessment Tool for Promoting Behavioral Health Among Black Youth developed for U.S. Department of Health & Human Services Office of Minority Health in conjunction with ATW Health Solutions.

Draft tool under review.



Conclusion

- The policy assessment process can be used to examine the impact of policies on marginalized communities and those hardest hit by health disparities
- Researchers play an important role in policy assessment by generating evidence to understand a policy's impact
- Partnering with marginalized communities and communities of color is an essential component of effective policy assessment and research

Thank you!

Let's Stay in Touch

Nefertiti OjiNjideka Hemphill, PhD, MS

Nefertiti.O.Hemphill@atwhealth.com

Khanan Chaudhry, BA

Khanan.Chaudhry@atwhealth.com

312.858.6800 (phone)

312.858.7464 (fax)

www.atwhealth.com (web)



About ATW Health Solutions

”Raising Healthcare’s Standard through quality, safety and health equity.”



ATW HEALTH SOLUTIONS
Raising Healthcare’s Standard™

- Quality Improvement and Healthcare Transformation
- Person and Family Engagement / Stakeholder Engagement / Consumer Engagement
- Disparities and Health Equity
- Education / Learning and Dissemination
- Health Services, Payers, Systems and Delivery





References

Awaad, R., El-Gabalawy, O., Jackson-Shaheed, E., Zia, B., Keshavarzi, H., Mogahed, D., & Altalib, H. (2021, July 21). Suicide Attempts of Muslims Compared With Other Religious Groups in the US. *Jama Network*. Retrieved September 15, 2022, from <https://jamanetwork.com/journals/jamapsychiatry/article-abstract/2782161>

González, H. M., Tarraf, W., Whitfield, K. E., & Vega, W. A. (2010). The epidemiology of major depression and ethnicity in the United States. *Journal of psychiatric research*, 44(15), 1043–1051. <https://doi.org/10.1016/j.jpsychires.2010.03.017>

Liu, C. Z., Wang, E., Nguyen, D., Sun, M. D., & Jumreornvong, O. (2022). The Model Minority Myth, Data Aggregation, and the Role of Medical Schools in Combating Anti-Asian Sentiment. *Academic medicine : journal of the Association of American Medical Colleges*, 97(6), 797–803.

Ramchand, R., Gordon, J. A., & Pearson, J. L. (2021). Trends in Suicide Rates by Race and Ethnicity in the United States. *JAMA network open*, 4(5), e2111563. <https://doi.org/10.1001/jamanetworkopen.2021.11563>