

# What's the Evidence? Why Does Validity Even Matter?

## *A Systematic Review & Quality Assessment of Multidomain Social Needs Screening Tools*



@CaraCLewis

Cara C. Lewis, Nora Henrikson, Paula Blasi, Caitlin Dorsey, Kayne Mettert, Callie Walsh-Bailey, Matthew Nguyen, Consuelo Norris, Jennifer Macuiba, Caroline Fichtenberg, Laura Gottlieb

# Background & Context

---

## 4 systematic reviews

- 2 of 4 focused on pediatric settings
- 2 explored effectiveness of screening for identifying social needs, providing referrals
- 1 described tool development process
- 1 examined methodological quality using COSMIN

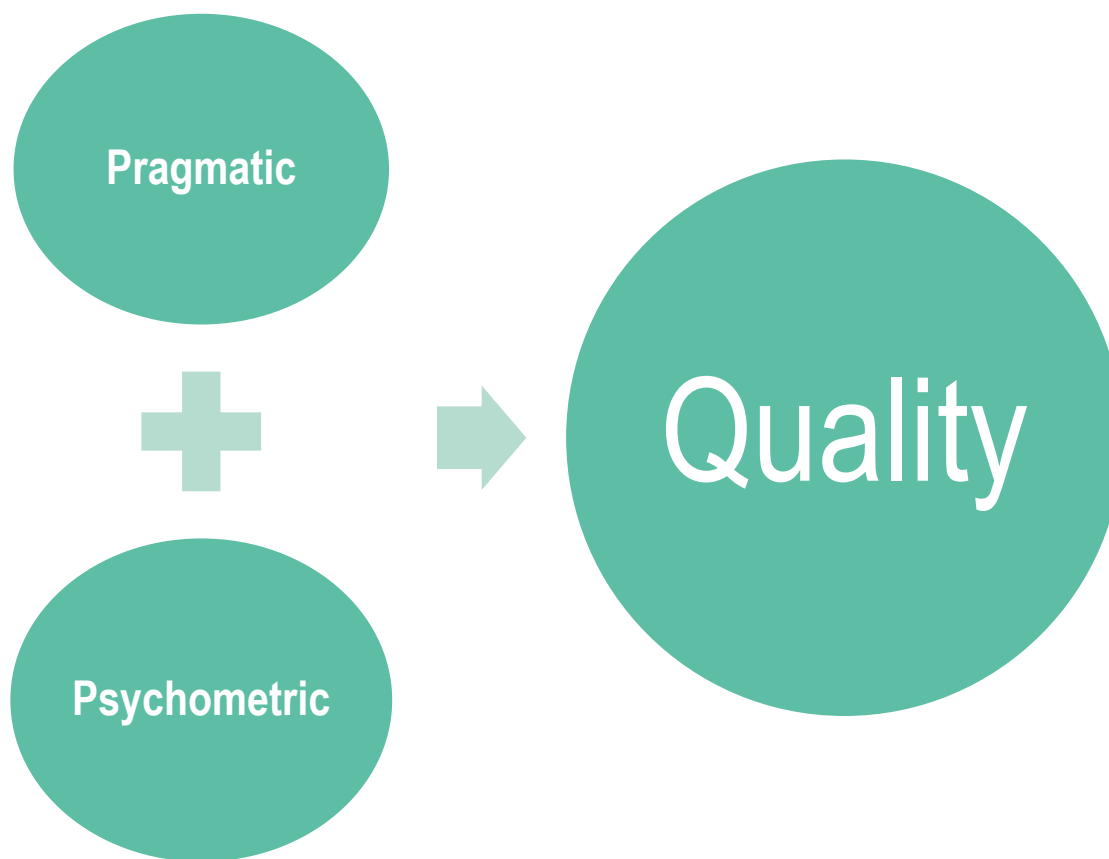
## Impetus for our study

- Need for mapping multidomain measures
- Limited assessment of psychometric properties of SDOH screening tools
- No assessment of pragmatic properties

# Systematic Review Objectives

---

To evaluate the current state of multidomain tools intended for screening social needs in health care settings



# Pragmatic Properties

---

## Objective

## Subjective

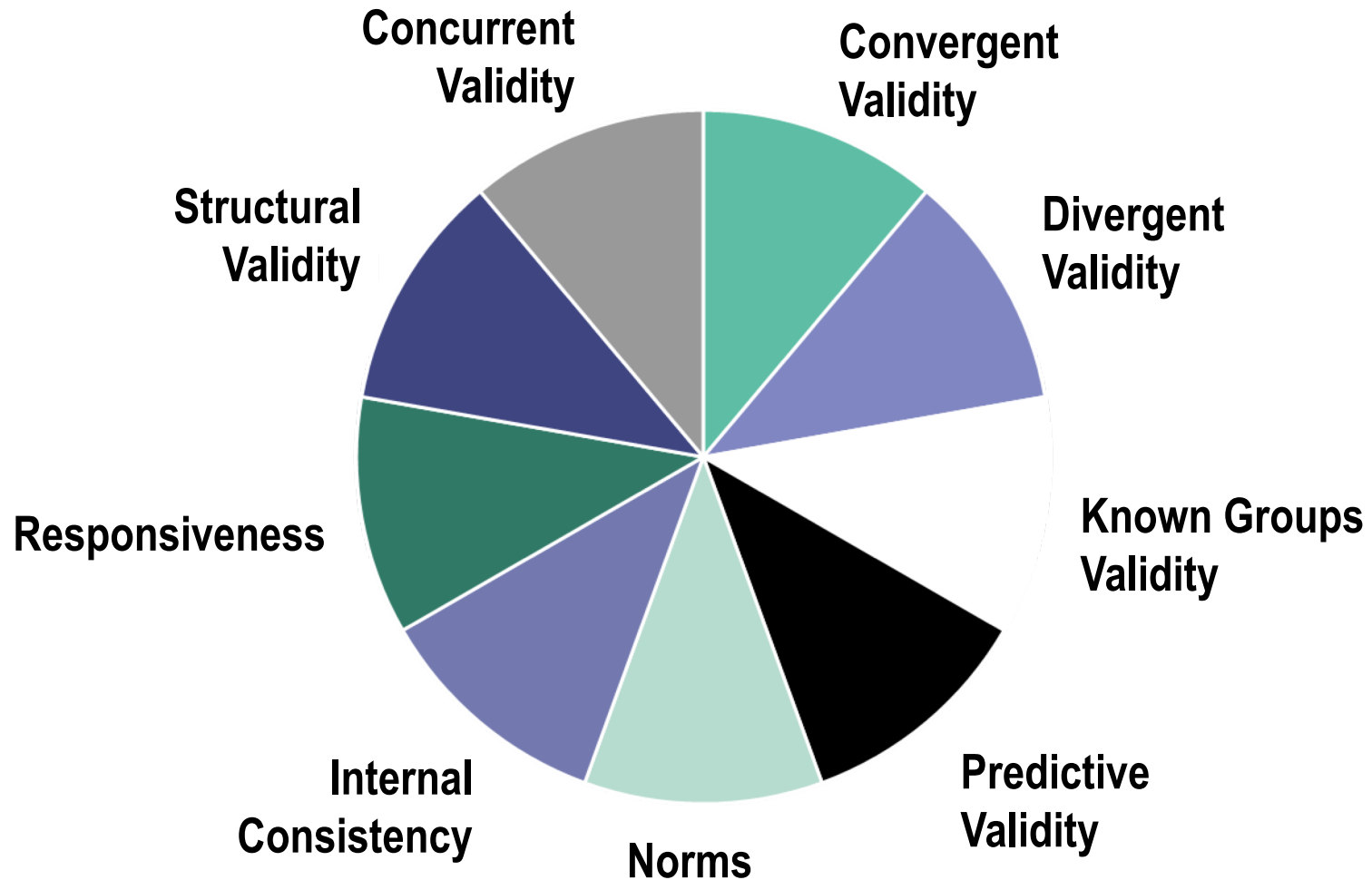


- ☐ Cost
- ☐ Language
- ☐ Administration & Scoring
- ☐ Length



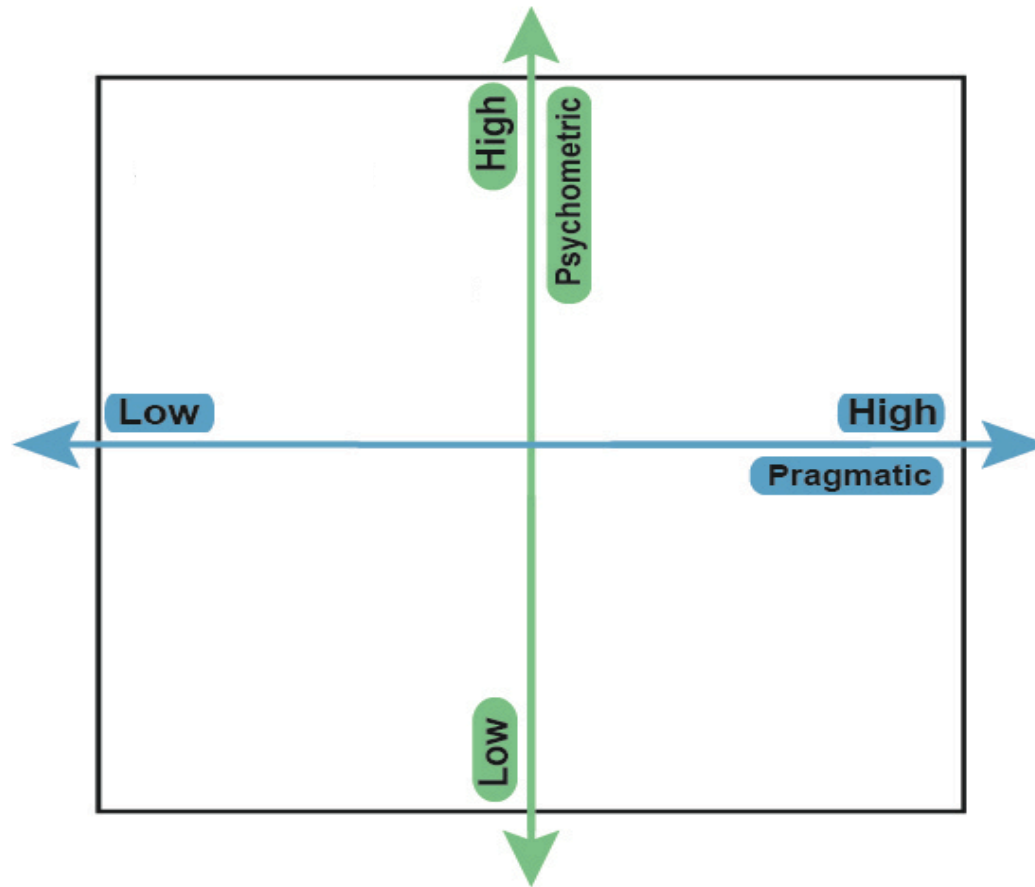
- ☐ Acceptable, Appropriate
- ☐ Relative Advantage
- ☐ Informs Clinical Decisions
- ☐ Fits Organizational Activities

# Which of these psychometric properties do you care about?



# Psychometric versus Pragmatic Strength

---

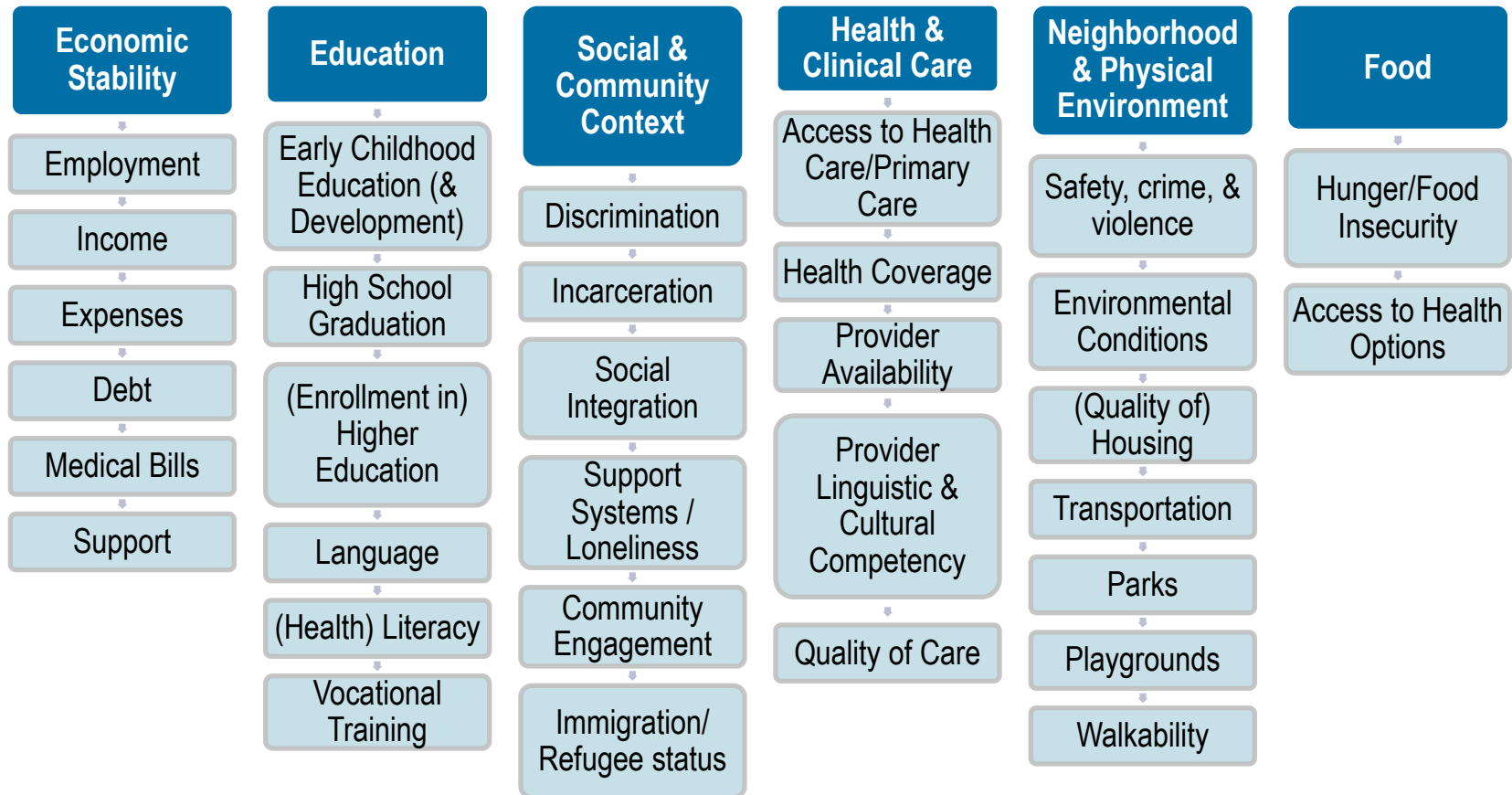


# METHODS

---

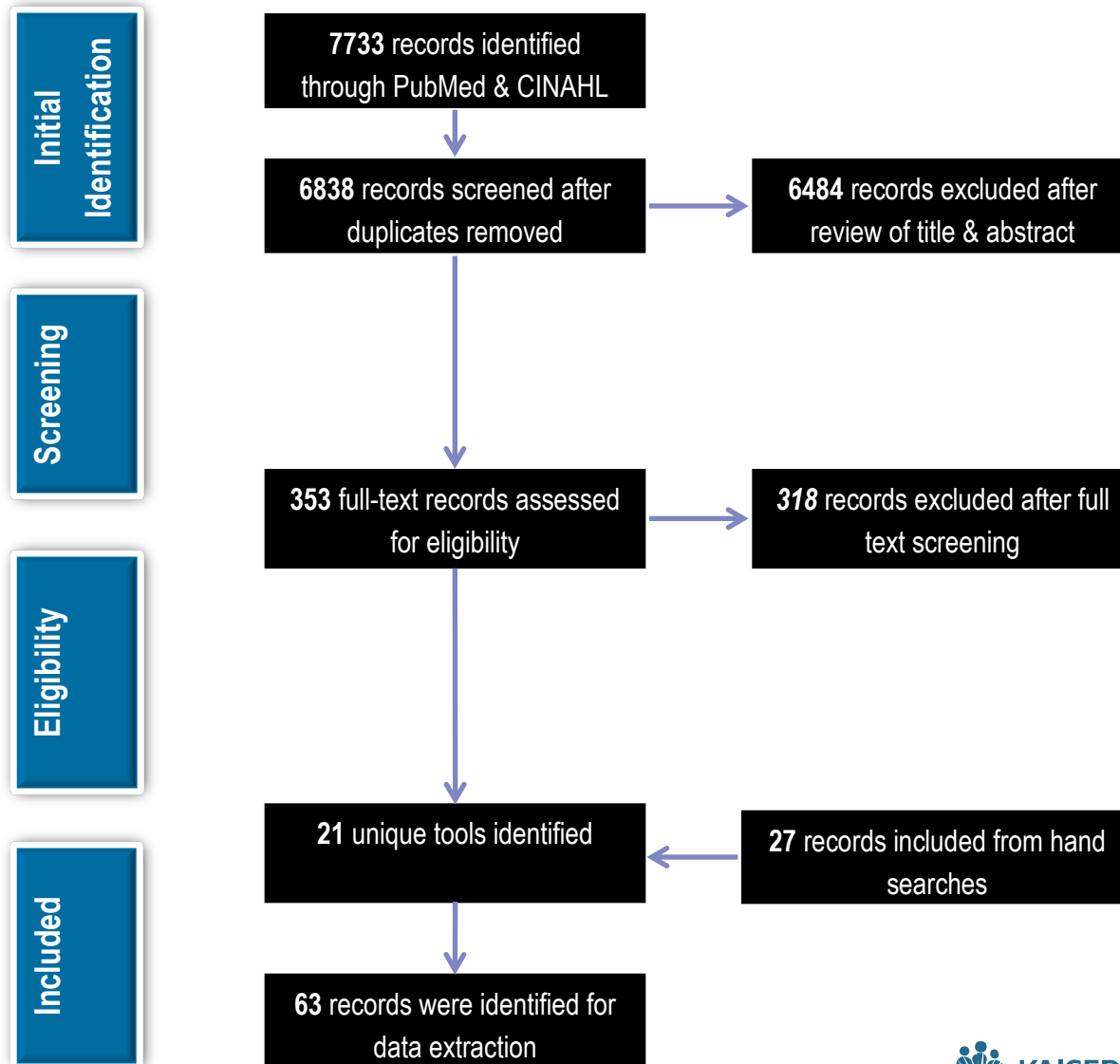
Phases	Description
1: Systematic Search	Identify multidomain tools via PubMed and Embase
2: Empirical Uses	Identify all empirical uses of included tools

# CONSTRUCTS OF INTEREST





# FINDINGS: PRISMA FLOW CHART



# INCLUDED TOOLS

The Accountable  
Health Communities  
Health-Related Social  
Needs Screening Tool  
(2017)

HealthBegins  
Upstream Risk  
Screening Tool (2015)

Health Leads Social  
Needs Screening  
Toolkit (2016)

HelpSteps (Online  
Advocate; 2015)

iHELP Pediatric  
Social History Tool  
(2007)

IOM Recommended  
Social & Behavioral  
Domains & Measures  
for EHR (2014)

Legal Checkup (2011)

Medical-Legal  
Partnership  
Screening Guide  
(2015)

Partners in Health  
Survey (1997)

Protocol for Responding  
to and Assessing  
Patients' Assets, Risks  
and Experiences  
(PRAPARE; 2016)

SEEK Parent  
Questionnaire (2007)

Social History  
Template (2012)

Social Needs  
Checklist (1996)

Structural  
Vulnerability  
Assessment Tool  
(2017)

Survey of Well-Being  
of Young Children  
(SWYC; 2010)

Total Health  
Assessment  
Questionnaire for  
Medicare Members  
(2014)

Urban Life Stressors  
Scale (1996)

Well Child Care,  
Evaluation, Community  
Resources, Advocacy,  
Referral Education (WE  
CARE; 2007)

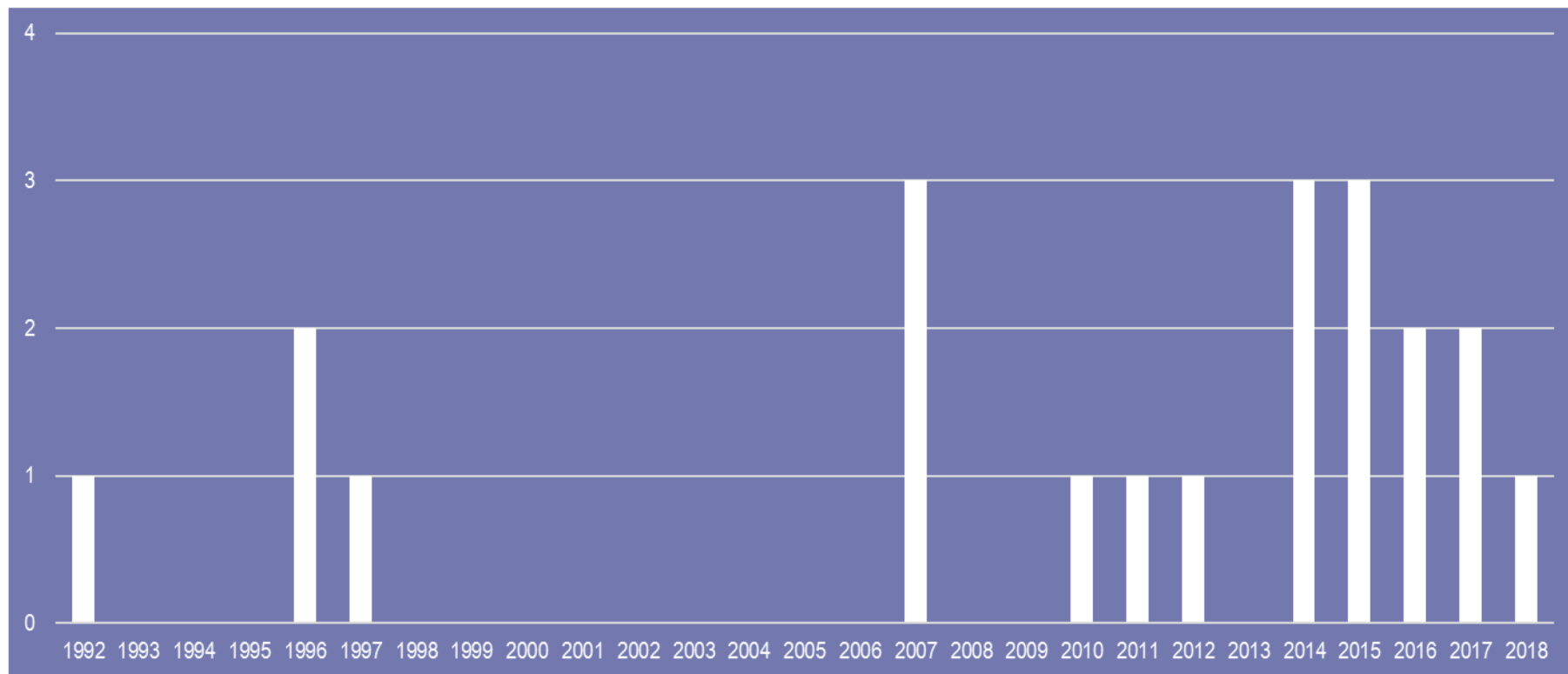
Well RX Toolkit  
(2014)

Women's Health  
Questionnaire (1992)

Your Current Life  
Situation (YCLS;  
2018)

Black text = Expert identified tools  
White text = Review identified tools

# Development of Multidomain Tools Over Time



Tool	# items	# Empirical uses	Social Risk Domain Assessed					
			Econ	Edu	SCC	HCC	NPE	Food
AHC-HRSN	26	1						
Health Begins	28	2						
Health Leads	7	4						
HelpSteps	130	2						
iHELP/iHELLP	17	5						
IOM/NAM	23	3						
Legal Checkup	18	2						
MLP	10	1						
Partners in Health Survey	118	1						
PRAPARE	36	3						
SEEK	20	10						

Abbreviations: Econ = Economic Security; Ed = Education; SCC = Social & Community Context; HCC = Health and Clinical Care; NPE = Neighborhood & Physical Environment

Tool	# items	# Empirical uses	Social Risk Domain Assessed					
			Econ	Edu	SCC	HCC	NPE	Food
Social History Template	7	3						
Social Needs Checklist	5	3						
Structural Vulnerability Assessment Tool	43	1						
SWYC	12	5						
Total Health Assessment	36	2						
Urban Life Stressors Scale	21	3						
WeCare	10	5						
Well Rx	11	1						
Women's Health Questionnaire	NR	4						
Your Current Life Situation	32	1						

Abbreviations: Econ = Economic Security; Ed = Education; SCC = Social & Community Context; HCC = Health and Clinical Care; NPE = Neighborhood & Physical Environment

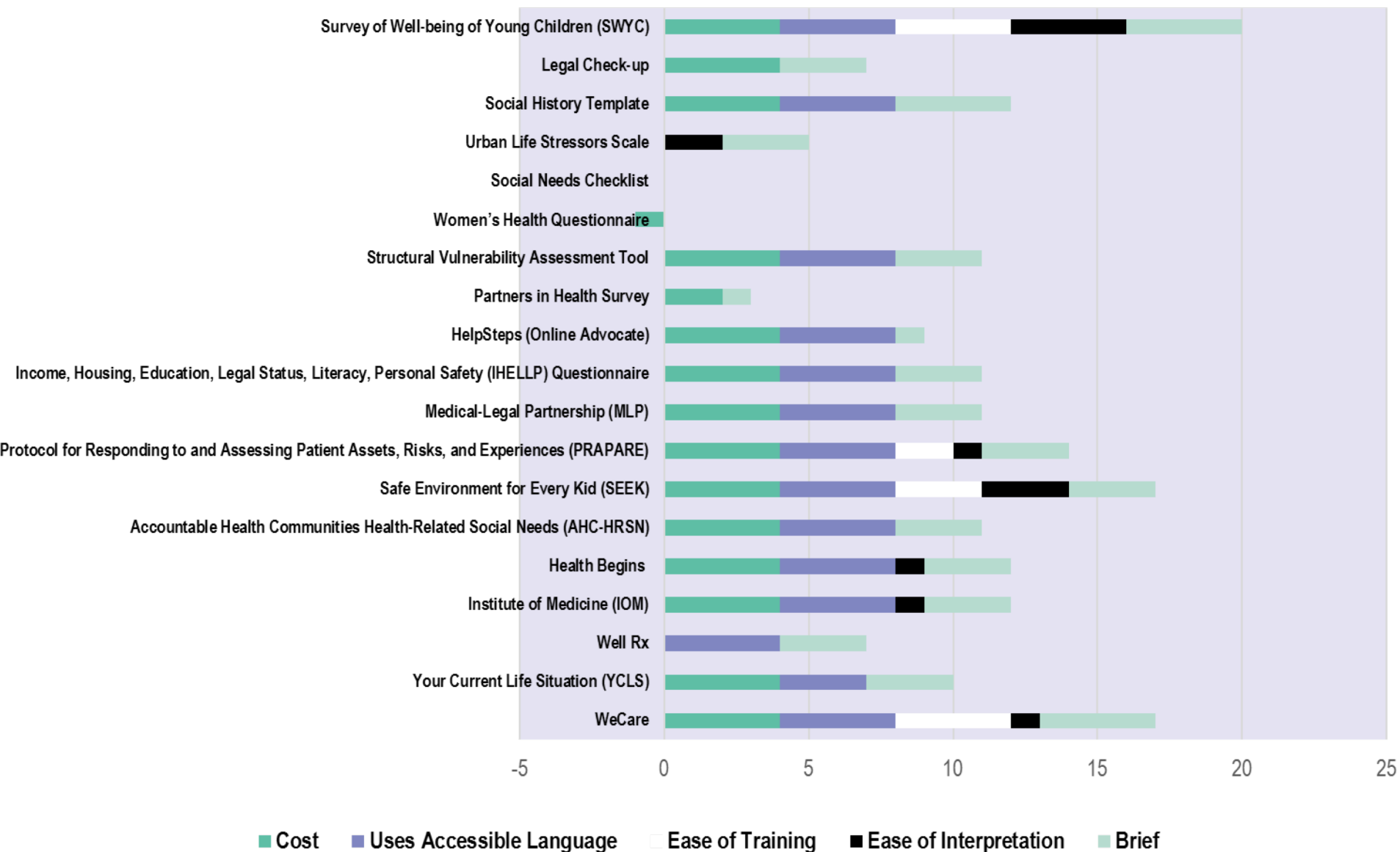
# FINDINGS: Gold Standard Development Methods

---

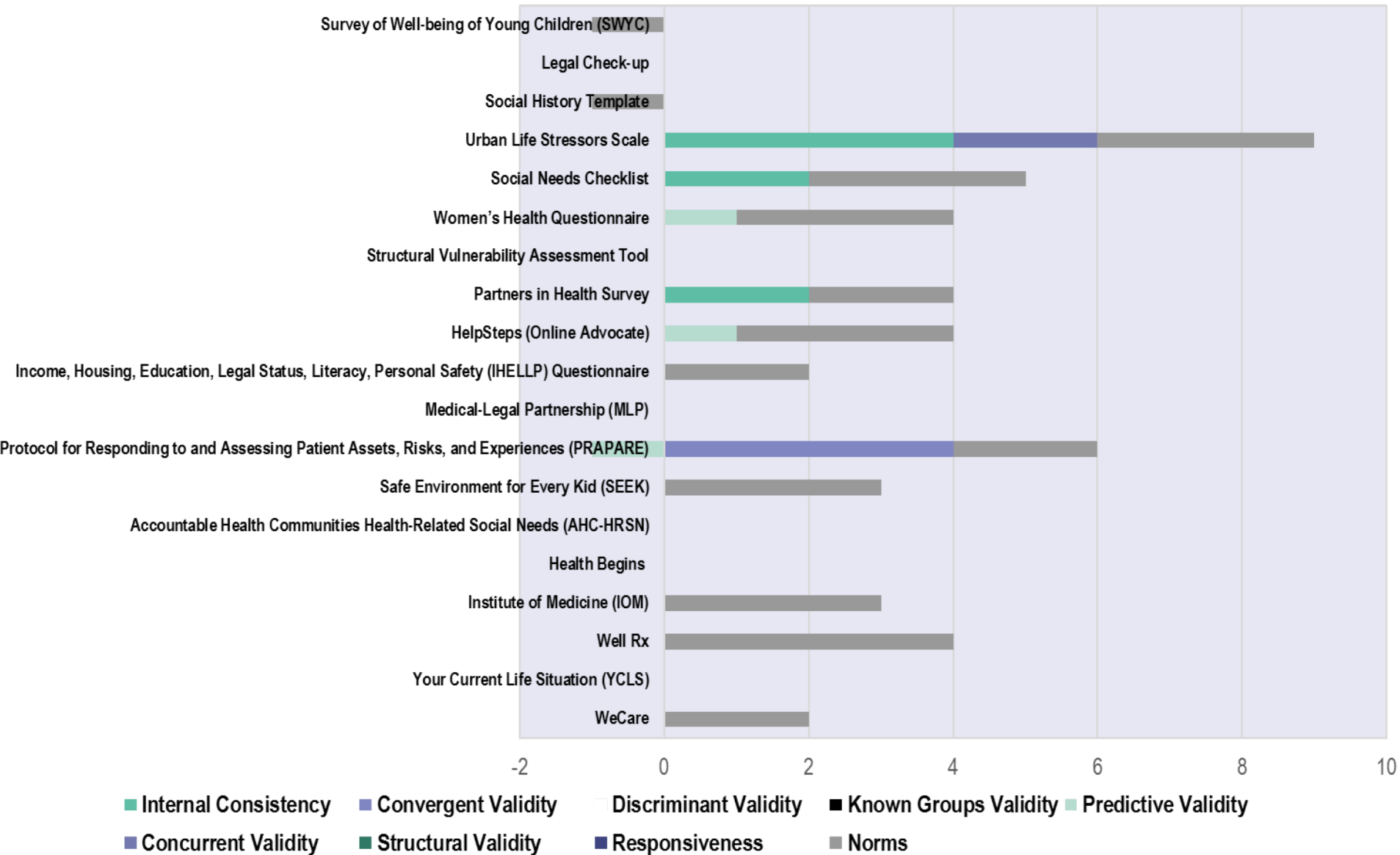
8 Typical Steps to Gold Standard Tool Development

Of the tools identified, the median number of steps was 2

# Pragmatic Quality Ratings



# Psychometric Quality Ratings



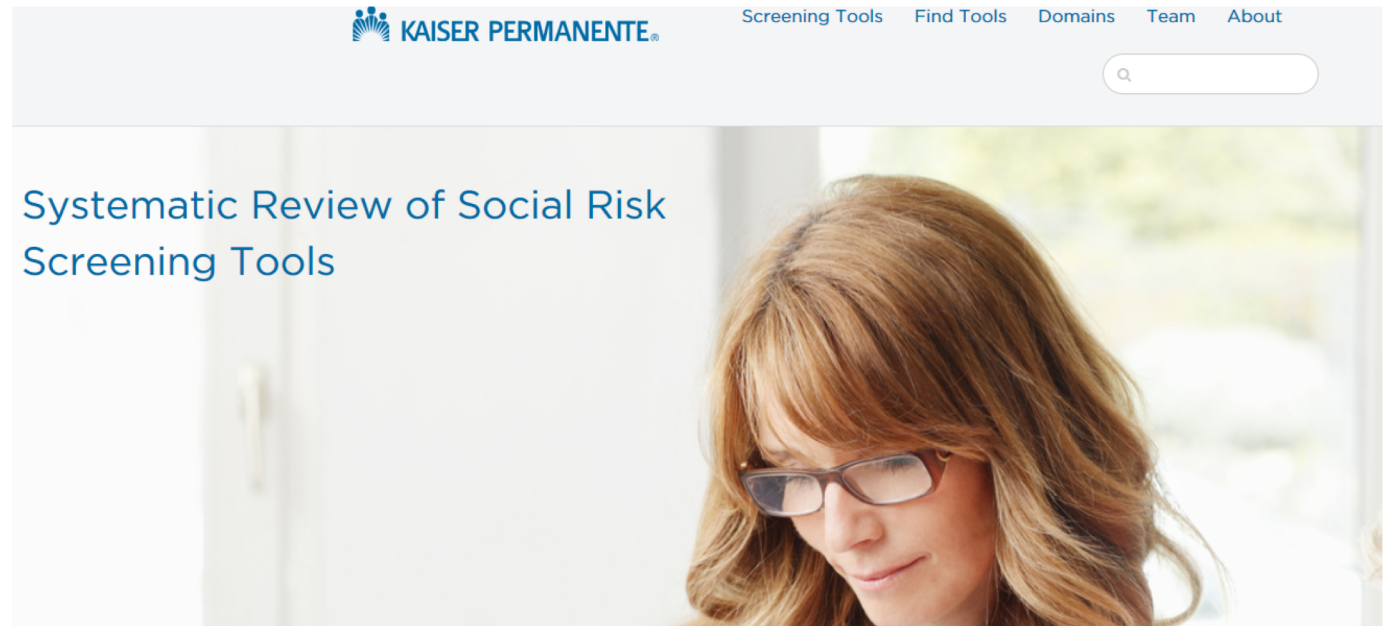


# Findings Available Online



@CaraCLewis

- <http://sdh-tools-review.kpwwashingtonresearch.org/>



## Screening for Social Risk

Health care systems are increasingly interested in screening for social risk factors given their prevalence and strong connection to health outcomes. [Healthy People 2020 Objectives](#) include addressing social determinants of

## About the Site

This site is intended to help interested stakeholders (e.g., researchers, health care system administrators, providers, community partners) select social risk assessment tools most appropriate to their setting and population. Our team at Kaiser Permanente Washington Health

## Find Tools

Learn more about the tools included in our review

# Questions for the Field

---

- What types of psychometric properties are most important here?
- What factors should be considered when selecting “promising” screening tools?
- Should we be screening about social needs or desire for help or experienced burden of need?

# Thank you

Cara C. Lewis, PhD  
[Cara.C.Lewis@kp.org](mailto:Cara.C.Lewis@kp.org)